

The cost of cancer to your business

Cancer in the workplace is a growing concern

125,000

125,000 people of working age are diagnosed with cancer in the UK each year¹.

4 million

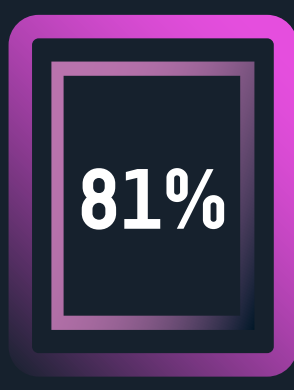
4 million people in the UK are predicted to be living with cancer by 2030².

One cancer diagnosis has a huge impact³

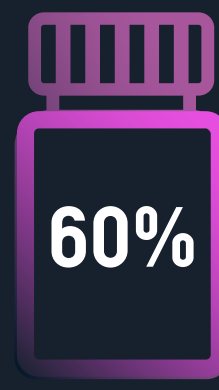


It takes a village to support those affected by cancer.

It affects your team with a decline in productivity and employee engagement



of HR Managers think a diagnosis can affect an employee's performance.



of employees would continue to work despite feeling unwell.

It affects everyone's ability to work differently

Anxiety and depression can be heightened

Lack of engagement with the team if feeling unsupported

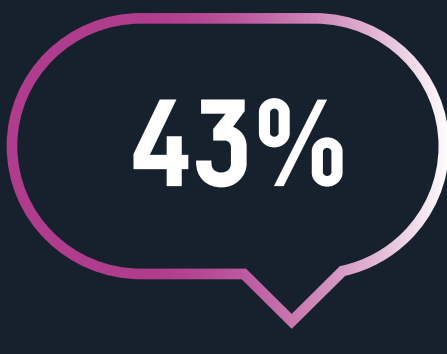
Psychological strain when adjusting back to normality after treatment

Difficulty in concentration or remembering things when feeling fatigued

Low self-esteem due to changes in their appearance

Balancing work and personal life when caring for a loved one

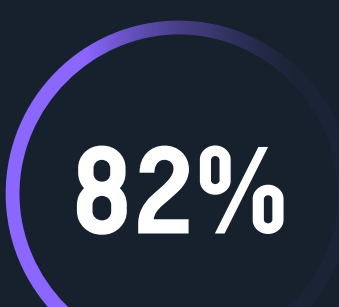
It's a step into the unknown



of employers don't believe their line managers are equipped to support employees with cancer.

1 in 4

employees think that they would be pressured by their employer to continue working or return to work.



of employees are not aware if their employer would provide support if they were faced with a diagnosis.

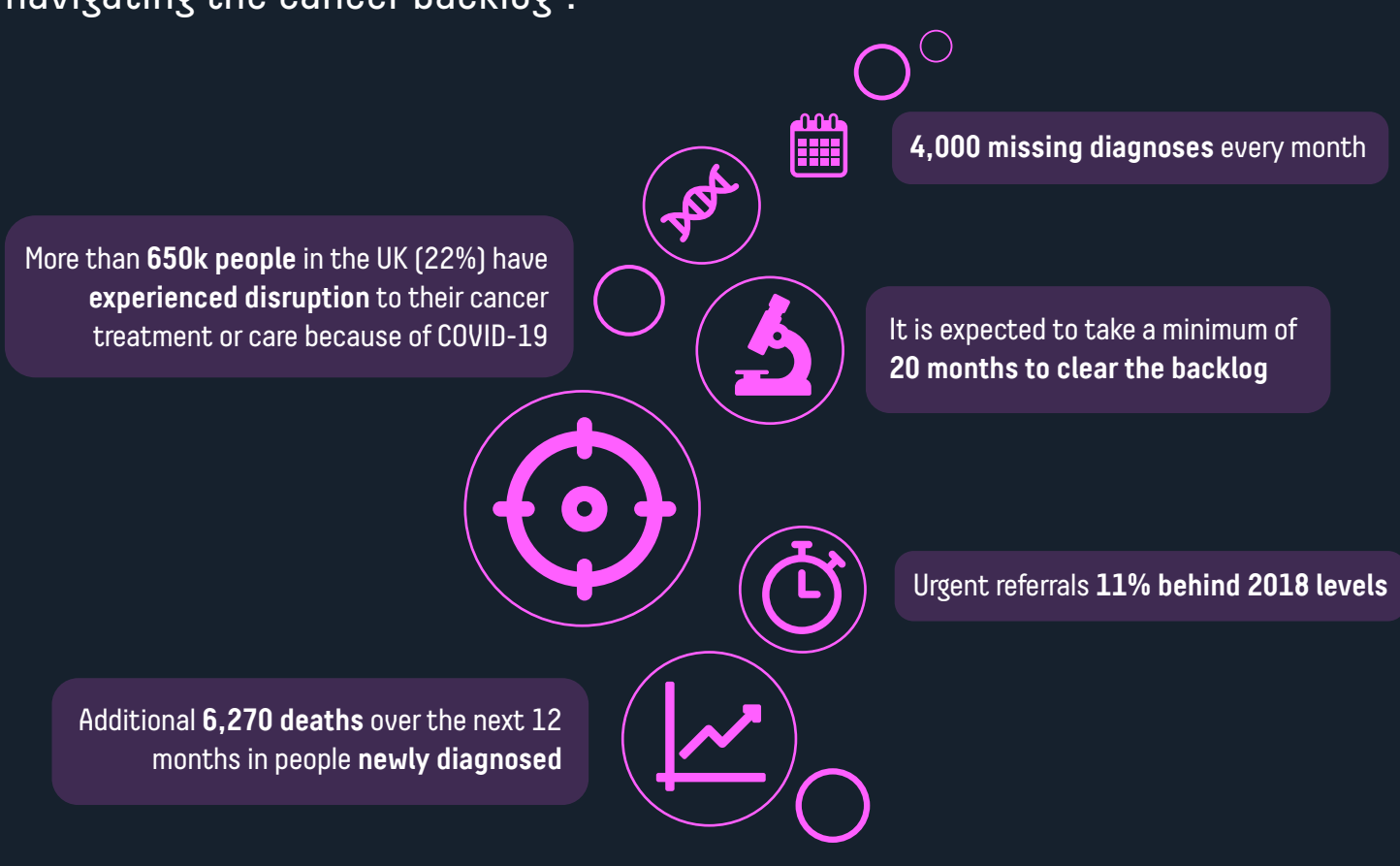
It's life changing

Almost **half** of those who are working when diagnosed have to make changes to their working lives after cancer, with **4 in 10** changing jobs or leaving work altogether⁴.



It's been significantly impacted by COVID

The pandemic has left those diagnosed, and their loved ones, navigating the cancer backlog⁵.



Taking care of someone with cancer is a moment that matters. **Find out how we do it.**

Personalised support to help people impacted by cancer achieve the best possible outcomes.



0207 965 0286
hello@reframe.co.uk
reframe.co.uk

Research based on 1000 employees in the UK conducted by YouGov. Commissioned by Reframe, 2019.
1 <https://www.macmillan.org.uk/about-us/what-we-do/how-we-work/work-and-cancer>
2 Statistics fact sheet 2019, Macmillan
3 Based on Reframe's experience of cancer
4 https://www.macmillan.org.uk/_images/making-the-shift-specialist-work-support-for-people-with-cancer_tcm9-295091.pdf
5 <https://www.macmillan.org.uk/assets/forgotten-c-impact-of-covid-19-on-cancer-care.pdf>